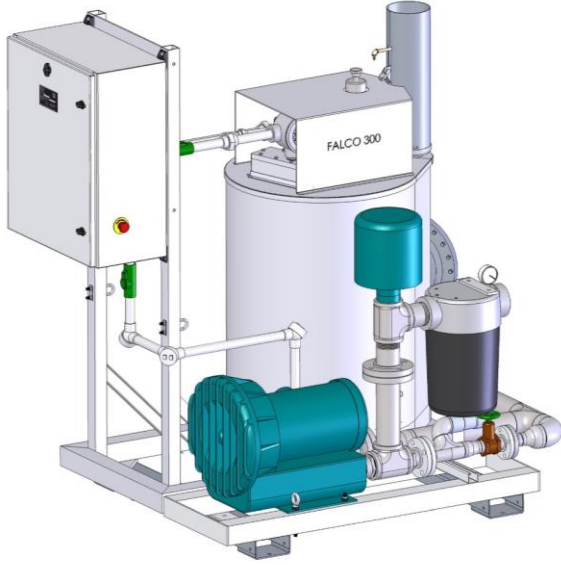


FALCO 300 with 10 hp Booster Blower



The FALCO 300 with booster blower is an ideal solution for low concentration applications when active vapor control is not required and source flow doesn't fluctuate. Applications include air strippers and low concentration manufacturing applications.

The system can accept incoming flow rates up to 300 scfm. A recirculation valve allows adjustment of booster blower flow between 170 and 350 scfm.

This system may also be used in high vacuum soil vapor extraction applications where the source flow rate is low but high in concentrations. In such cases, the booster blower adds large amounts of dilution air which maximizes productivity and doesn't affect well vacuum. A FALCO Vapor Control Valve can be installed on the vacuum side of the claw blower to provide active vapor control.

Components are mounted on frames joined by forklift beams. One frame supports the blower and accessories. The second frame supports the FALCO 300. This low-profile system weighs only 1,460 lb. and is 50" wide, 73" long, and 74" tall. This standardized package is easily installed and operated and can be integrated into a wide range of process vapor streams.

Packaged system includes the following:

- FALCO 300 Catalytic Oxidizer
- Gast 10 hp, three phase, explosion proof, regenerative blower
- Recirculation valve for flow adjustment
- Solberg inline process air and dilution filters
- Stainless steel vacuum and pressure gauges
- Stainless steel mounting rails with forklift pockets
- Mounting frames, stainless steel factory piping and wiring between FALCO and blower
- Factory Mutual approval for use in Class 1, Division 2, Group D Hazardous Locations



FALCO 300 specifications:

- CAPACITY 100-350 scfm (dilution air + process flow)
- MAXIMUM INPUT LOADING 0.15 lb/min VOCs @ 19,000 BTU/lb (2850 BTU/min)
- DESTRUCTION EFFICIENCY Up to 99.5%
- CATALYST OPERATION RANGE (standard) 330-620°C (626-1148°F)
- CATALYST Packed bed 2.5 cubic feet. Precious metal on 1/8" ceramic beads is standard. Alternate catalysts are also available
- HEAT EXCHANGER Stainless steel spiral plate. 74% efficient at 300 scfm
- HEATER (Electric Solid State Control) 56 amp @ 208V (20.3 kW) or, 65 amp @ 240V (27 kW) or, 32.5 amp @ 480V (27 kW)
- CONSTRUCTION 304 Stainless steel heat exchanger and piping
Aluminum frame
- POWER REQUIREMENTS Heater and Blower: 3 phase 208-240V, *Optional* 3 phase 480V
Controls: 120V



FALMOUTH PRODUCTS P.O. BOX 541 FALMOUTH, MA 02541
Phone 508 548 6686 www.falmouthproducts.com
sales@falmouthproducts.com